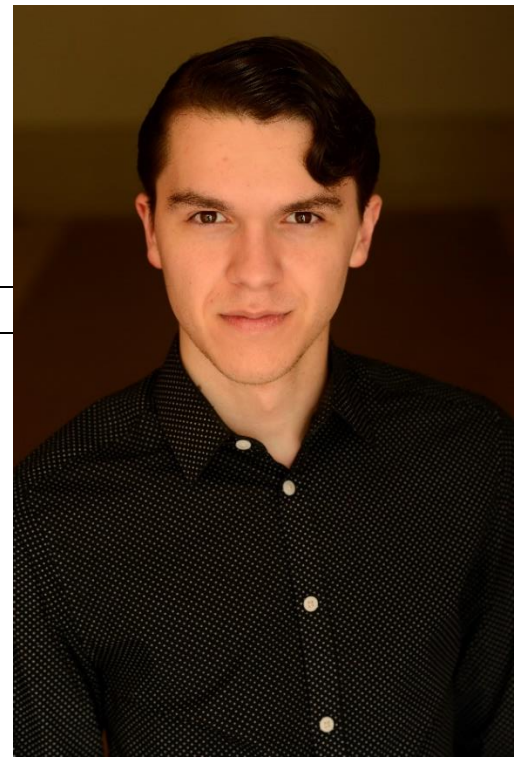


Matthew Nassida

(He/They)
Dramatist Guild Member



EDUCATION

Northern Kentucky University (grad. 2020)

BFA Musical Theatre Performance / Minor in Music (Piano)

Directorial studies under prof. Brain Robertson/Michael Hatton/Jamey Strawn

New York University (grad. 2023)

MFA Musical Theatre Writing

DIRECTORIAL EXPERIENCE

<i>Eurydice</i>	<i>Northern Kentucky University</i>	<i>Director/Lighting Designer</i>
<i>Arsenic and Old Lace</i>	<i>Med-o-Lark</i>	<i>Director/Set; Lighting Designer</i>
<i>The Spitfire Grill</i>	<i>Footlighters Inc.</i>	<i>Director/Choreographer</i>
<i>Jerry Finnegan's Sister</i>	<i>Med-o-Lark</i>	<i>Director/Set; Lighting Designer</i>
<i>The Last Five Years</i>	<i>Northern Kentucky University</i>	<i>Director/Music Director</i>
<i>Putnam County Spelling Bee</i>	<i>Spotlight Acting School</i>	<i>Director/Choreographer</i>
<i>The Lion King</i>	<i>Cincinnati Playhouse</i>	<i>Director/Choreographer</i>
<i>Devon's Diary</i>	<i>Carnegie Reading</i>	<i>Director/Choreographer</i>
<i>Alice @ Wonderland (20 minute)</i>	<i>Med-o-Lark</i>	<i>Director/Set; Lighting Designer</i>

RELATED EXPERIENCE

Show schedule & organizational skills, piano, experience communicating with all facets of show creation in depth on their work including designers, technicians, cast, & creative, pedagogical experience involving music, acting, & dance.

Contact Matthew for references or any other questions